



via Volta 42/44 Costabissara-VI
 Uff. commerciale tel.0444/557136 fax.0444/973670
 Uff. tecnico tel.0444/557898 fax.0444/557890
 ufficiotecnico@garbinprefabbricati.it

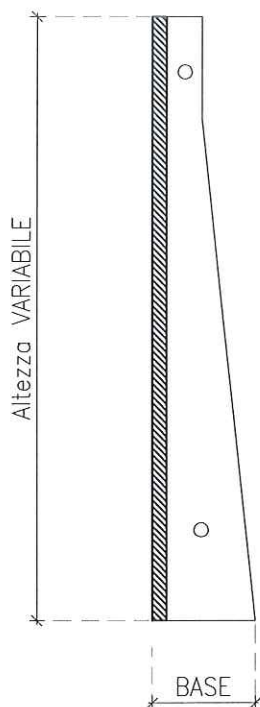
EN 15258 – MURI DI SOSTEGNO



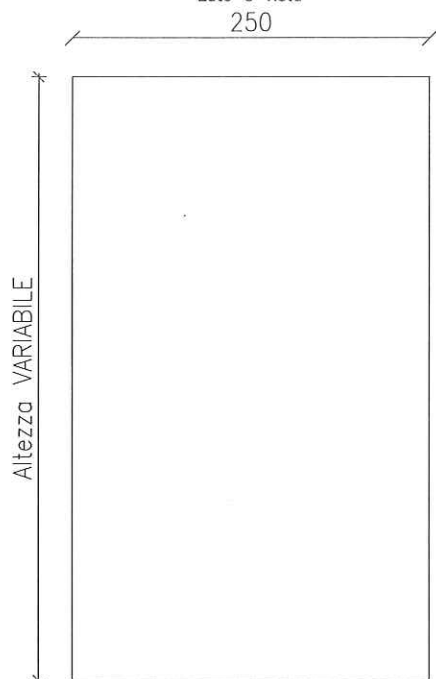
MURO DI SOSTEGNO A TERRA

MOD. 7.3.27 – REV. 2 – DEL 18.02.2019

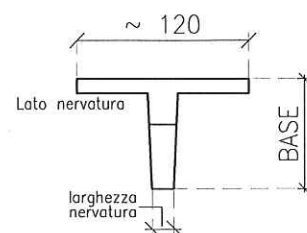
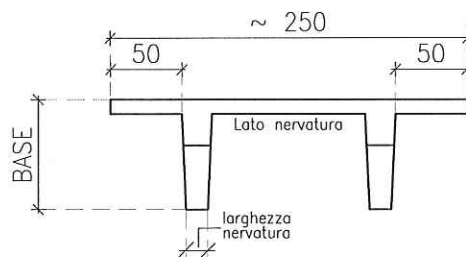
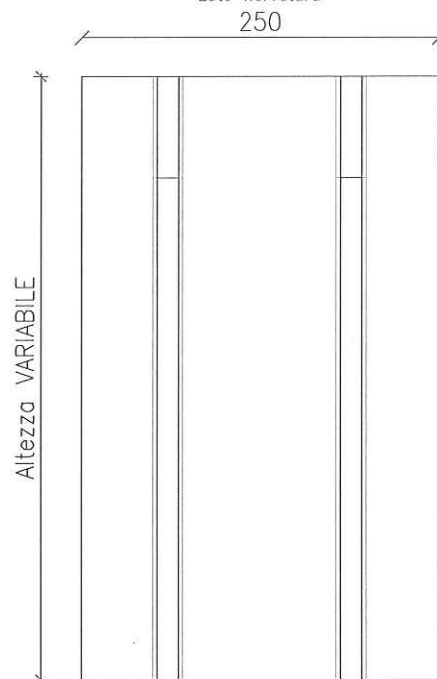
SEZIONE



PROSPETTO
Lato a Vista



PROSPETTO
Lato nervatura



ALTEZZA TOTALE MAX	BASE (Soletto 10)	BASE (Soletto 15)	SCATOLA	LARGHEZZA NERVATURA	PESO kg (S 10)	PESO kg (S 15)
250	55	60	25	15	2250	3000
300	66	71	30	15	2850	3800
350	77	82	35	15	3500	4600
400	88	93	40	15	4250	5500
450	99	104	45	15	5000	6400
500	110	115	50	15	5850	7400
550	110	115	50	15	6450	8200
600	132	137	60	18	7950	9850
650	132	137	60	18	8650	10700
700	154	159	70	18	10100	12300
750	154	159	70	18	10900	13200
800	176	181	80	18	12500	15000
850	176	181	80	18	13350	16000
900	186	191	90	18	14600	17400